



Base Lux Slate marfil 160x80 cm

Base Slate

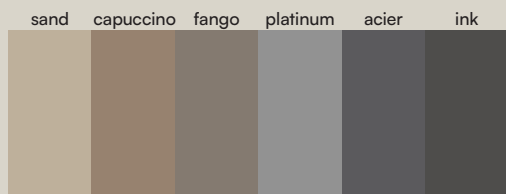
Standard



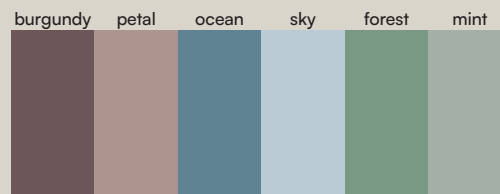
Ral / NCS



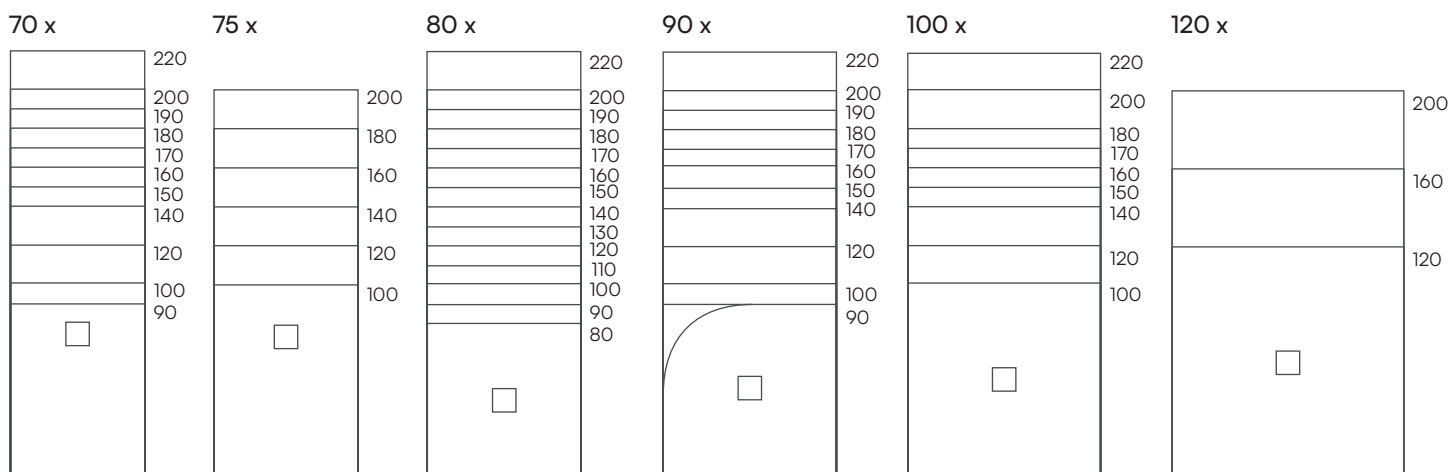
Naturally Made



Season



Dimensiones (cm)



acquabella

Dimensiones (cm)

A	B	C
90	70/80	25
100	70/75/80/90	25
110	80	25
120	70/75/80/90/100	25
130	80	25
140	70/75/80/90/100	55
150	70/80/90/100	55
160	70/75/80/90/100/120	55
170	70/80/90/100	55
180	70/75/80/90/100	55
180	80/90/100	90
190	70/80/90	55
200	70/75/80/90/100/120	55
200	80/90/100	100
220	70/80/90/100	110

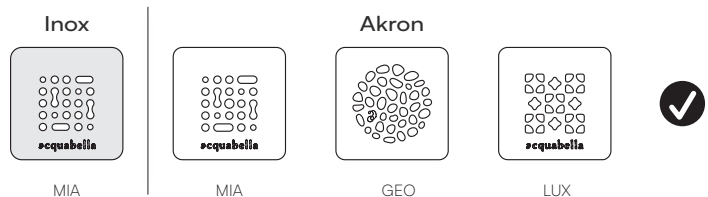
A	B	C
80	80	40
90	90	45
100	100	50
120	120	60

A	B	C
90	90	26
90 Dx	120	27
90 Sx	120	27

Textura



Rejilla



* Incluido un solo modelo de rejilla por plato de ducha, a elegir entre: Mia, Geo o Lux.

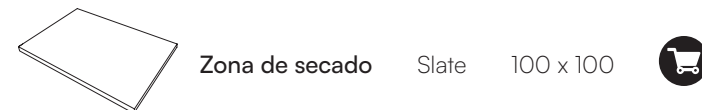
Moldura (cm)



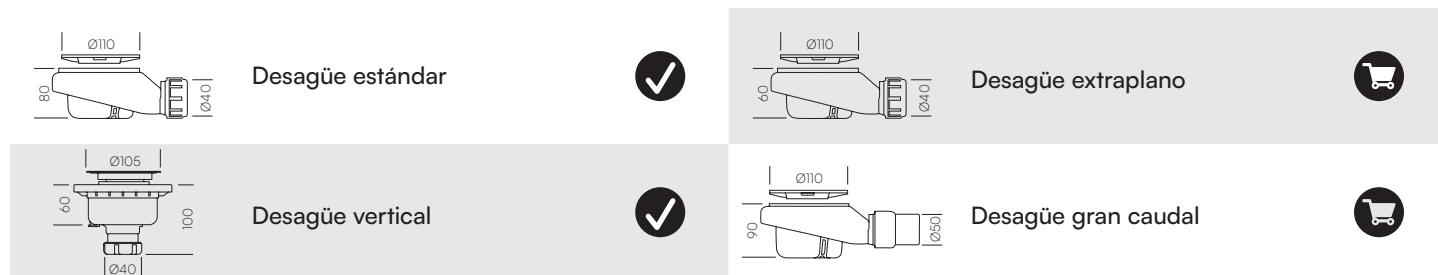
Zócalo de elevación (cm)



Zona de secado (cm)



Desagües (mm)



* Incluido un solo modelo de desagüe por plato de ducha.

Especificaciones técnicas

<p>CLASE C UNE- EN 16165:2022 Anexo A Antideslizamiento Clase C</p>	<p>Facilidad de corte</p>	<p>0% Si Corte seguro. Material sin sílice</p>
<p>NF XP P 05-010 Normativa francesa PN 24</p>	<p>Resistente al choque térmico</p>	<p>Resistente a impactos</p>
<p>ISO 22196:2011 Certificado antibacteriano</p>	<p>Resistente a la hidrólisis. 0% poliéster ortoftálico</p>	<p>CLASS 1 UNE-EN 14527:2016 + A1:2019 Clase 1</p>



Base Lux Slate marfil 160x80 cm

Base Slate

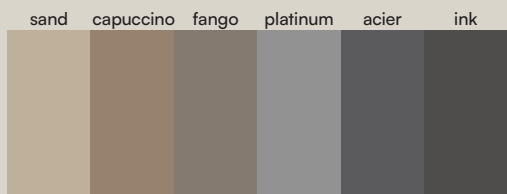
Standard



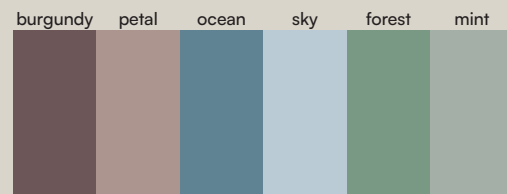
Ral / NCS



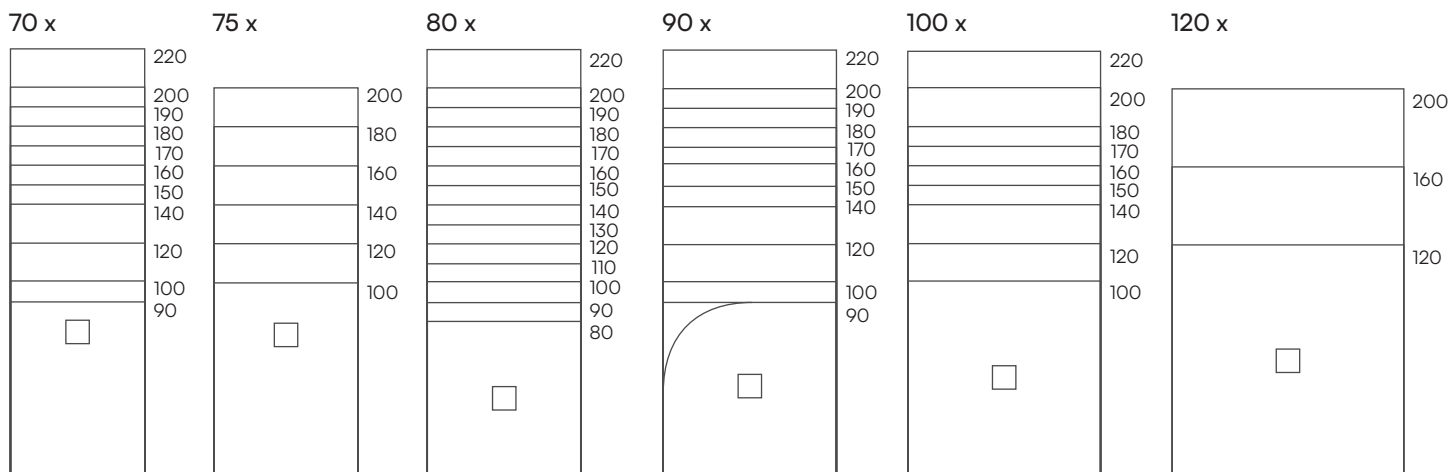
Naturally Made



Season



Dimensions (cm)



NOTE: Les dimensions maximales peuvent varier approx. ± 0,5%.

acquabella

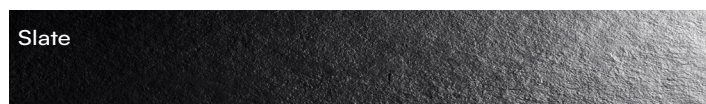
Dimensions (cm)

A	B	C
90	70/80	25
100	70/75/80/90	25
110	80	25
120	70/75/80/90/100	25
130	80	25
140	70/75/80/90/100	55
150	70/80/90/100	55
160	70/75/80/90/100/120	55
170	70/80/90/100	55
180	70/75/80/90/100	55
180	80/90/100	90
190	70/80/90	55
200	70/75/80/90/100/120	55
200	80/90/100	100
220	70/80/90/100	110

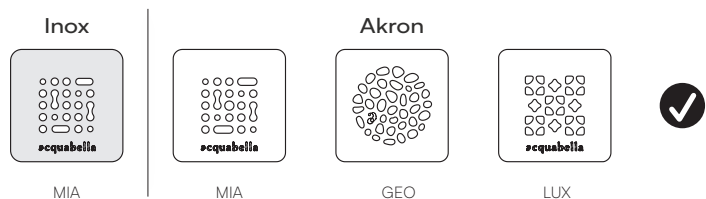
A	B	C
80	80	40
90	90	45
100	100	50
120	120	60

A	B	C
90	90	26
90 Dx	120	27
90 Sx	120	27

Texture



Grille



* N'est inclus qu'un seul modèle de grille par receveur de douche, à choisir entre: Mia, Geo ou Lux.

Rebord (cm)



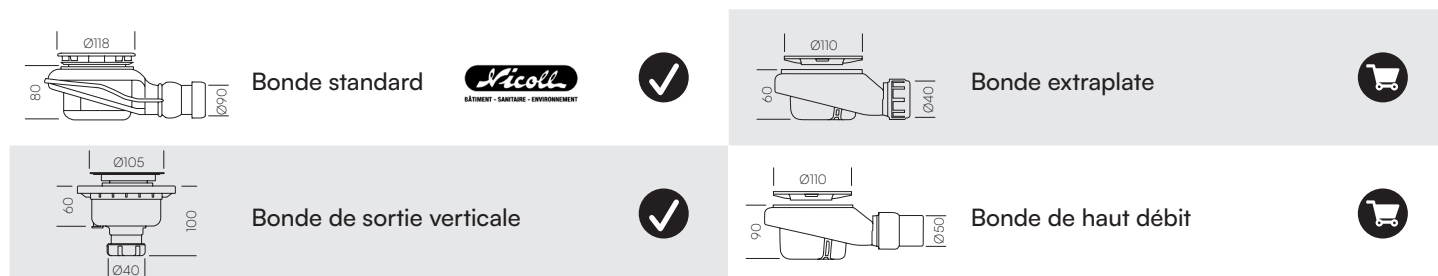
Habillage (cm)



Zone de séchage (cm)



Bondes (mm)



* N'est inclus qu'un seul modèle de bonde par receveur de douche.

Spécificités techniques

<p>UNE- EN 16165:2022 Annexe A Antidérapant Classe C</p>	<p>Facile à découper</p>	<p>Découpe sûre-matériau sans silice</p>
<p>XP P 05- Normative française PN 24</p>	<p>Résistant au choc thermique</p>	<p>Résistant aux impacts</p>
<p>ISO 22196:2011 Certificat antibactérien</p>	<p>Résistant à l'hydrolyse. 0% polyester ortoftálico</p>	<p>UNE-EN 14527:2016 + A1:2019 Classe 1</p>



Base Lux Slate marfil 160x80 cm

Base Slate

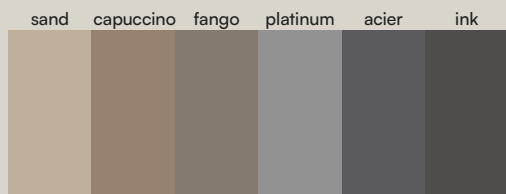
Standard



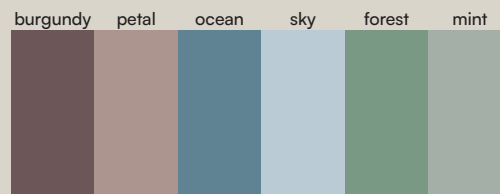
Ral / NCS



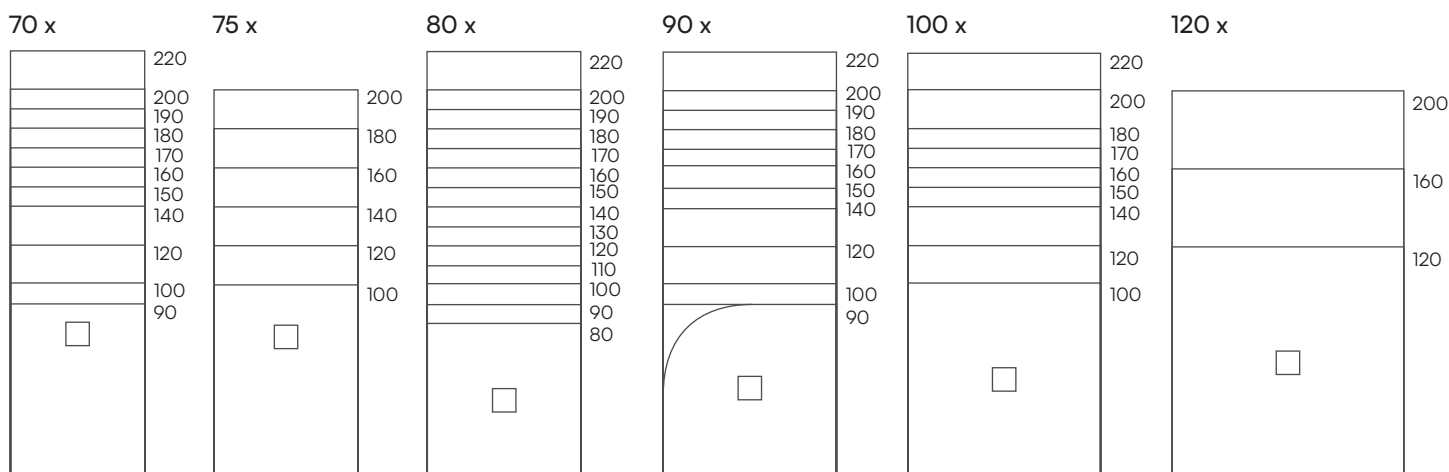
Naturally Made



Season



Sizes



NOTE: the maximum dimensions of Akron products can vary by ±0.5% in length and width.

acquabella

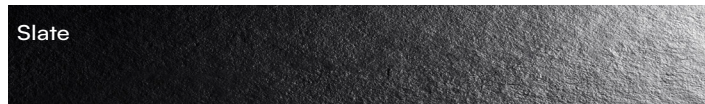
Sizes (cm)

A	B	C
90	70/80	25
100	70/75/80/90	25
110	80	25
120	70/75/80/90/100	25
130	80	25
140	70/75/80/90/100	55
150	70/80/90/100	55
160	70/75/80/90/100/120	55
170	70/80/90/100	55
180	70/75/80/90/100	55
180	80/90/100	90
190	70/80/90	55
200	70/75/80/90/100/120	55
200	80/90/100	100
220	70/80/90/100	110

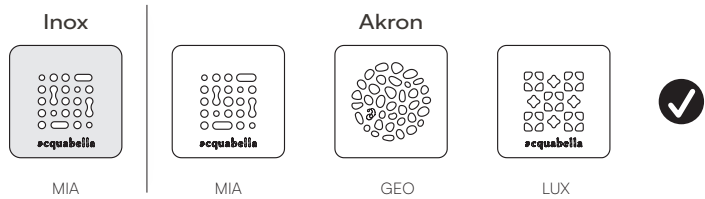
A	B	C
80	80	40
90	90	45
100	100	50
120	120	60

A	B	C
90	90	26
90 Dx	120	27
90 Sx	120	27

Texture



Grids



* Only one model of grid per shower tray is included, to choose between: Mia, Geo or Lux.

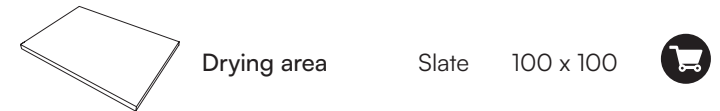
Frame (cm)



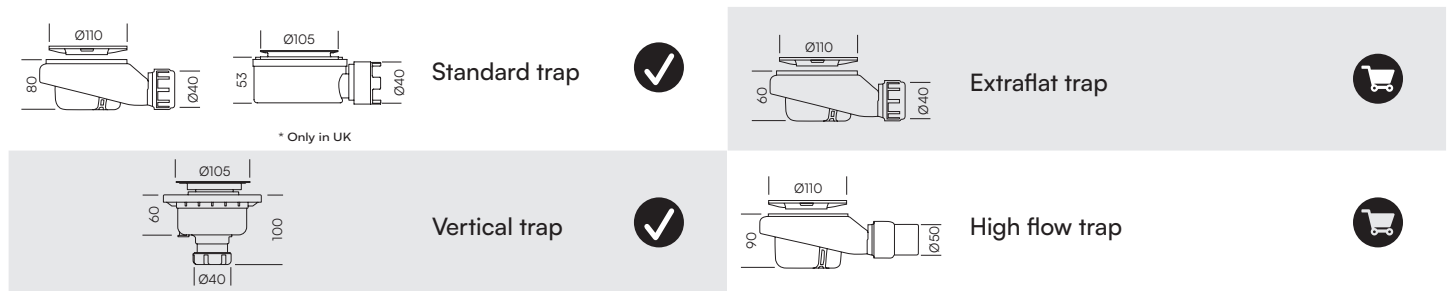
Skirt (cm)



Drying area (cm)



Traps (mm)



* Only one model of trap per shower tray is included.

Technical information

<p>CLASS C UNE- EN 16165:2022 Annex A Antislip Class C</p>	<p>Easy to cut</p>	<p>Safe cut. Material without silica</p>
<p>NF XP P 05-010 French Normative PN 24</p>	<p>Resistant to thermal shock</p>	<p>Impact resistant</p>
<p>ISO 22196:2011 Antibacterial certificate</p>	<p>Hydrolysis resistant. 0% ortoftal-polyester</p>	<p>CLASS 1 UNE-EN 14527:2016 + A1:2019 Class 1</p>



Base Lux Slate marfil 160x80 cm

Base Slate

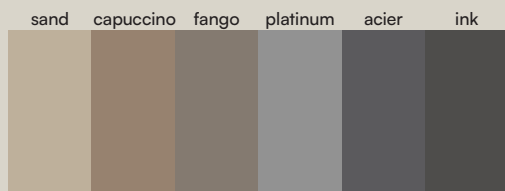
Standard



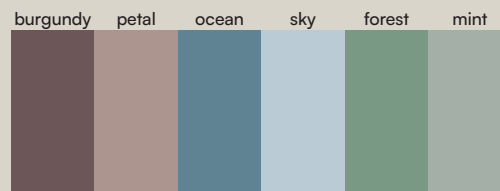
Ral / NCS



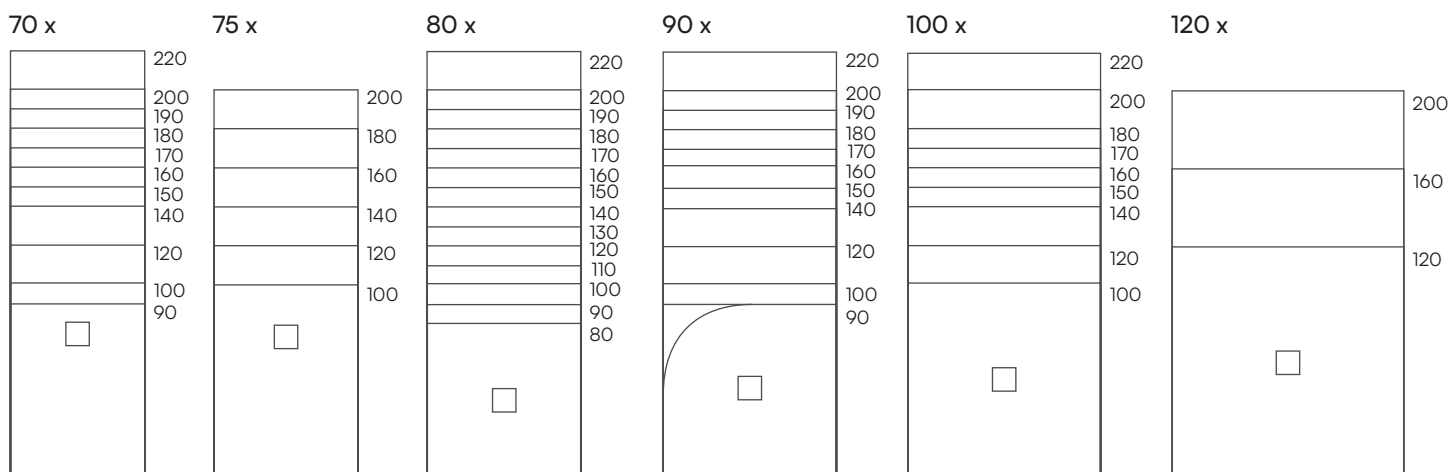
Naturally Made



Season



Misure • Abmessungen (cm)



NOTA: Nei prodotti Akron le dimensioni massime possono variare di $\pm 0,5\%$ in lunghezza e larghezza.
 HINWEIS: Bei Akron-Produkten können die maximalen Abmessungen in Länge und Breite um $\pm 0,5\%$ variieren.

acquabella

Dimensioni • Abmessungen (cm)

A	B	C
90	70/80	25
100	70/75/80/90	25
110	80	25
120	70/75/80/90/100	25
130	80	25
140	70/75/80/90/100	55
150	70/80/90/100	55
160	70/75/80/90/100/120	55
170	70/80/90/100	55
180	70/75/80/90/100	55
180	80/90/100	90
190	70/80/90	55
200	70/75/80/90/100/120	55
200	80/90/100	100
220	70/80/90/100	110

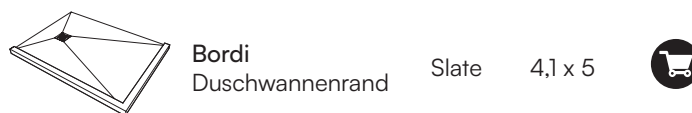
A	B	C
80	80	40
90	90	45
100	100	50
120	120	60

A	B	C
90	90	26
90 Dx	120	27
90 Sx	120	27

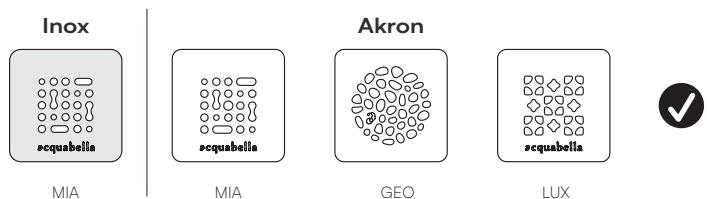
Finiture • Oberfläche



Bordi • Duschwannenrand (cm)



Griglia • Abdeckung

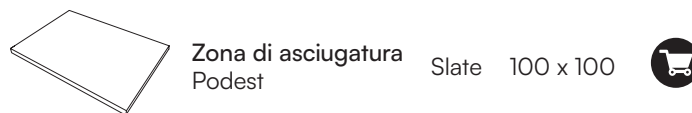


* Compreso un solo modello di griglia per piatto doccia.
* Pro Duschwanne ist nur ein Abdeckungsmodell enthalten.

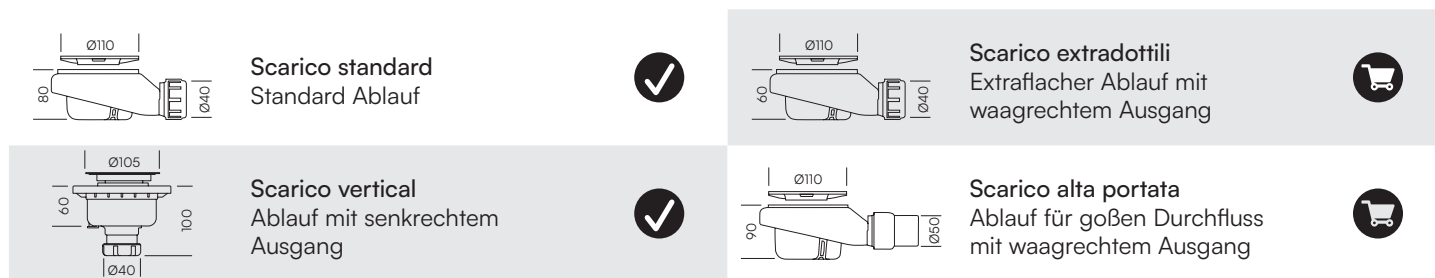
Zoccoli per piatti • Sockel (cm)



Zona di asciugatura • Podest (cm)



Scarichi • Abläufe (mm)



* Compreso un solo modello di scarico per piatto doccia • Pro Duschwanne ist nur ein Abläufmodell enthalten.

Specifiche tecniche • Technische spezifikationen

<p>UNE- EN 16165:2022 Allegato A • Anhang A Antiscivolo Classe C Rutschfestigkeit Klasse C</p>	<p>Facilità di taglio Einfach zu schneiden</p>	<p>Taglio sicuro. Materiale senza silice Sicherer Schnitt. Produkt ohne Silizium</p>
<p>XP P 05-010 Normativa francese PN 24 Französische Normative PN 24</p>	<p>Resistente allo shock termico Resistent gegen Temperaturschock</p>	<p>Resistente agli urti Schlagfest</p>
<p>ISO 22196:2011 Certificato antibatterico Zertifikat zur antibakteriellen Wirksamkeit</p>	<p>Resistente all'idrolisi. 0% poliestere orto-ftalico Resistent gegen hydrolyse. 0% ortoftal-polyester</p>	<p>UNE-EN 14527:2016 + A1:2019 Classe 1 Klasse 1</p>